



Cortijo del **Golf**  
RESORT  
Contemporary Apartments

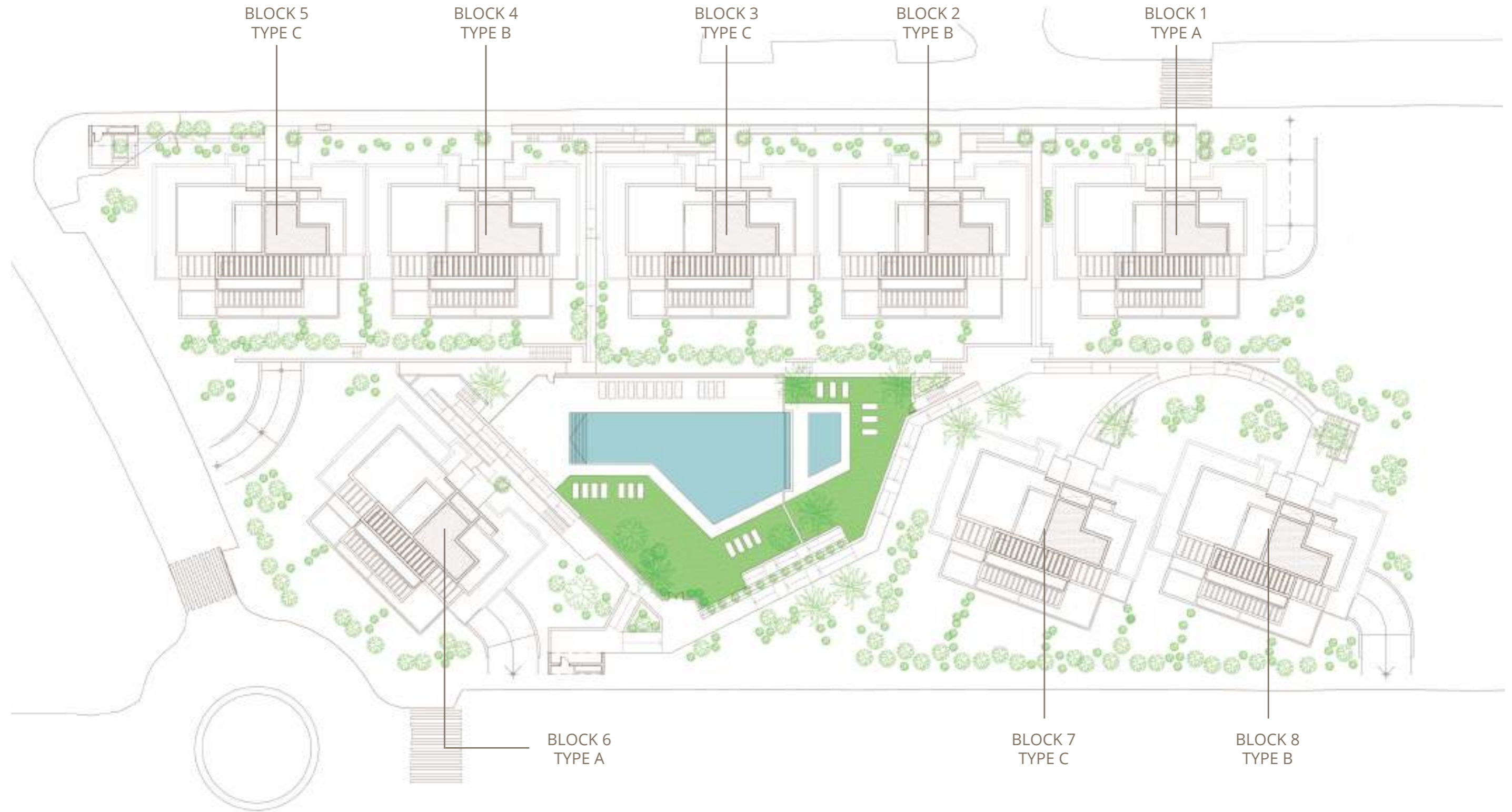
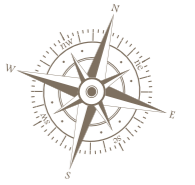


Floor Plans



# GENERAL FLOORPLAN

64 APARTMENTS, PARKING  
& STORAGE ROOMS



BLOCK 5  
TYPE C

BLOCK 4  
TYPE B

BLOCK 3  
TYPE C

BLOCK 2  
TYPE B

BLOCK 1  
TYPE A

BLOCK 6  
TYPE A

BLOCK 7  
TYPE C

BLOCK 8  
TYPE B



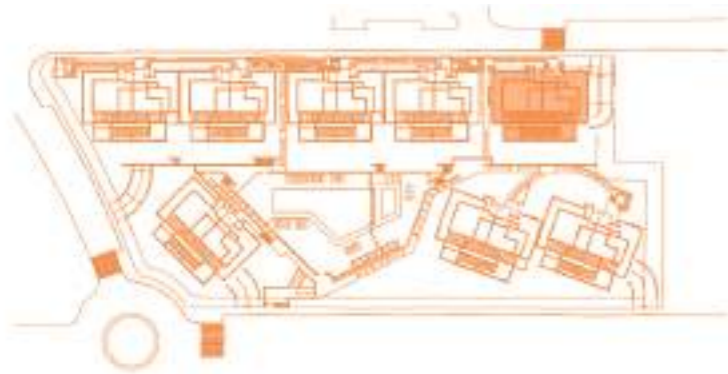
APARTMENTS

2 BEDROOMS





**APARTMENT 102**  
2 BEDROOMS  
BLOCK 1, TYPE A. GROUND FLOOR



BLOCK A



Ground floor

SURFACES	
Surface of constructed area	97,35 m <sup>2</sup>
Surface of communal area	10,41 m <sup>2</sup>
Surface of terrace area	40,85 m <sup>2</sup>
<b>TOTAL SURFACE</b>	<b>148,61 m<sup>2</sup></b>
Surface of utilised area	83,23 m <sup>2</sup>
Surface of utilised garden area	35,10 m <sup>2</sup>

Information given is subject to modification for technical, construction or legal reasons



BAR SCALE



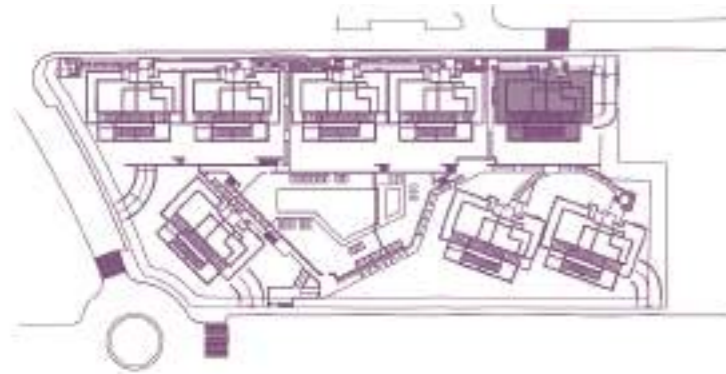
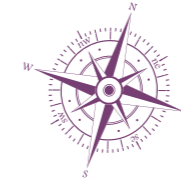
# APARTMENTS

3 BEDROOMS





**APARTMENT 101**  
3 BEDROOMS  
BLOCK 1, TYPE A. GROUND FLOOR



BLOCK A



Ground floor

SURFACES	
Surface of constructed area	113,92 m <sup>2</sup>
Surface of communal area	12,18 m <sup>2</sup>
Surface of terrace area	38,16 m <sup>2</sup>
<b>TOTAL SURFACE</b>	<b>164,26 m<sup>2</sup></b>
Surface of utilised area	96,46 m <sup>2</sup>
Surface of utilised garden area	52,86 m <sup>2</sup>

Information given is subject to modification for technical, construction or legal reasons



BAR SCALE



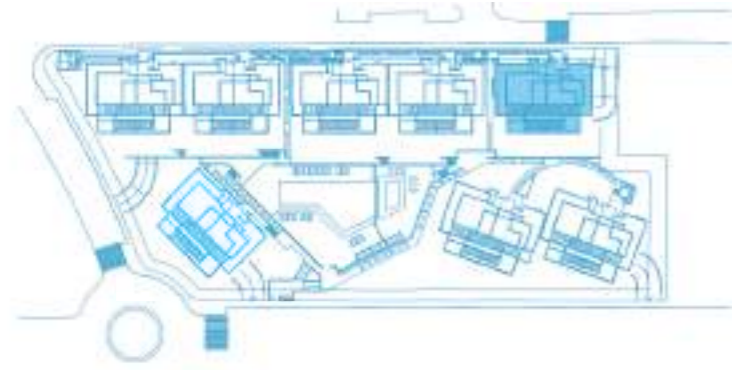
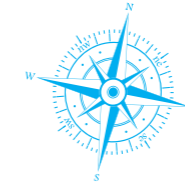
PENTHOUSE

2 BEDROOMS





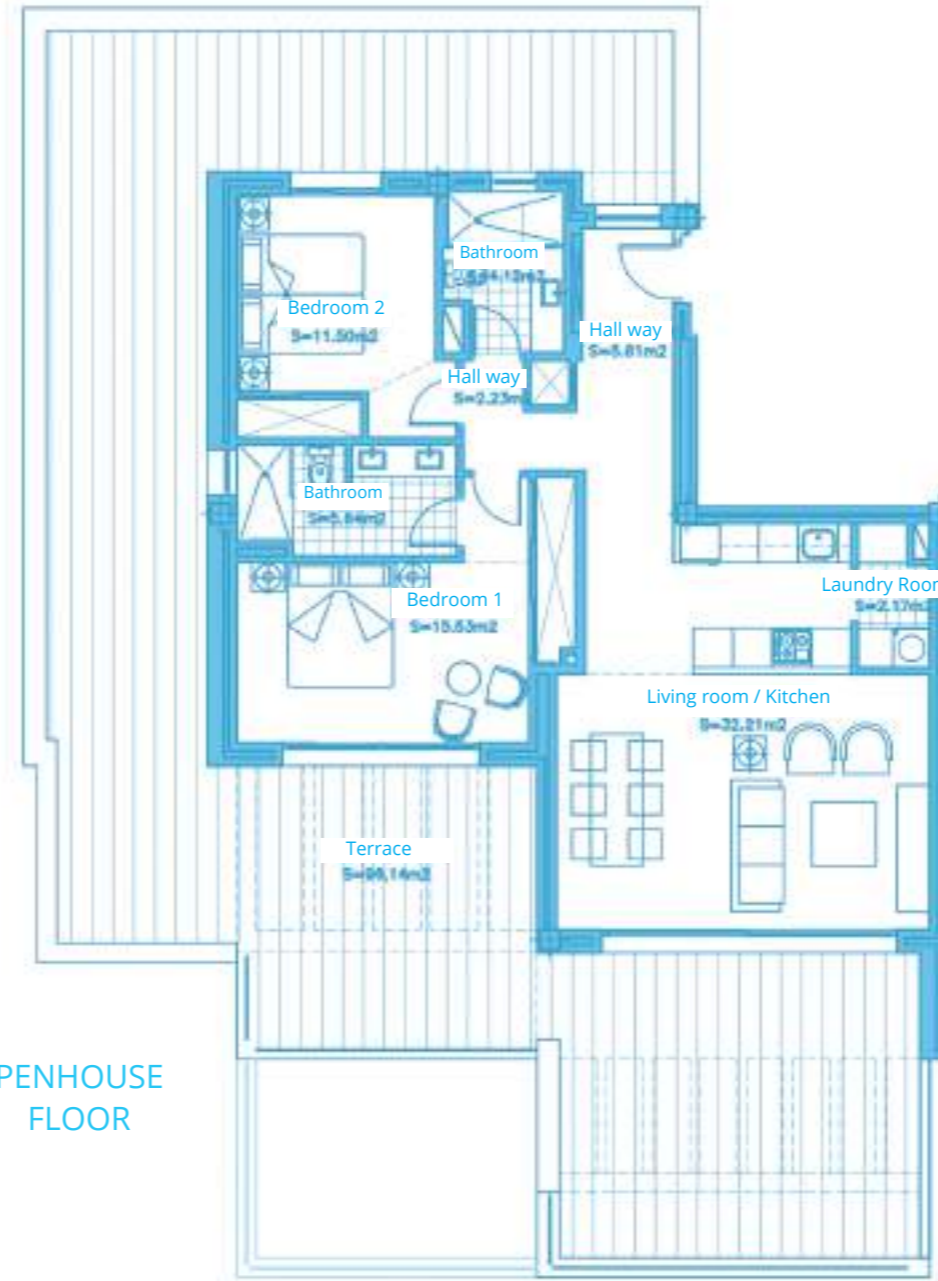
**APARTMENT 121**  
2 BEDROOMS  
BLOCK 1, TYPE A. PENHOUSE FLOOR



BLOCK A



PENHOUSE FLOOR



**SURFACES**

Surface of constructed area	94,82 m <sup>2</sup>
Surface of communal area	10,14 m <sup>2</sup>
Surface of terrace area	96,14 m <sup>2</sup>

**TOTAL SURFACE**

201,10 m<sup>2</sup>

Surface of utilised area

79,01 m<sup>2</sup>

Information given is subject to modification for technical, construction or legal reasons



BAR SCALE





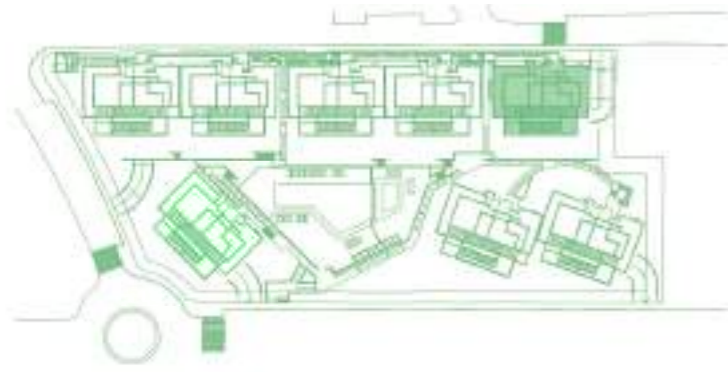
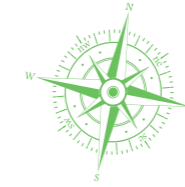
PENTHOUSE

3 BEDROOMS

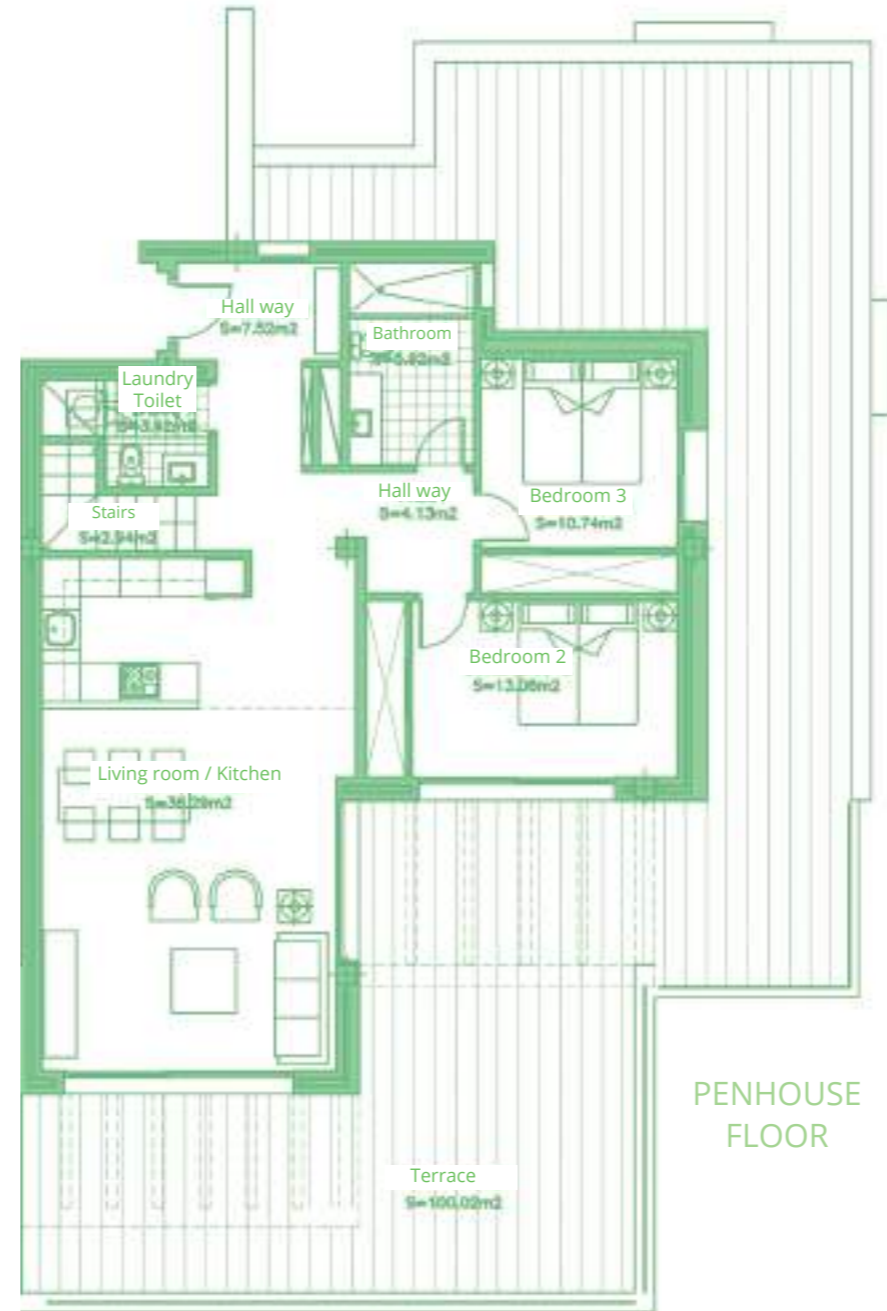
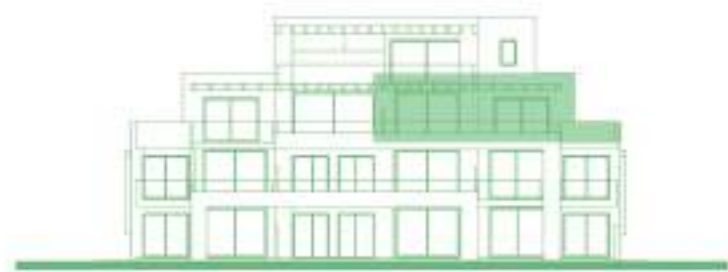




**APARTMENT 122**  
3 BEDROOMS  
BLOCK 1, TYPE A. PENHOUSE FLOOR



BLOCK A



PENHOUSE FLOOR

**SURFACES**

Surface of constructed area	142,93 m <sup>2</sup>
Surface of communal area	15,28 m <sup>2</sup>
Surface of terrace area	162,55 m <sup>2</sup>

**TOTAL SURFACE**

	320,76 m <sup>2</sup>
Surface of utilised area	116,48 m <sup>2</sup>

Information given is subject to modification for technical, construction or legal reasons



BAR SCALE

In compliance with the DECREE of the Junta de Andalucía 218/2005, the useful surface of exterior floor spaces which are for the private use of the dwellings means 50% of the actual surface to a maximum of 10% the useful enclosed surface.

Information, computer graphics and graphic documentation that appear in this document are indicative, finishings may include extras that are subject to changes arising from final project and its construction. All the furniture is merely decorative. The other information referred to in R.D.218/2005 of the Government of Andalusia, is available in our offices for consultation.



Calle Alquería 29688 · El Paraíso-Estepona · Málaga  
+34 682 36 02 22  
exxacon@exxacon.es

DEVELOPED BY

**exxacon**

Centro Comercial Guadalmina  
Edf. 3 Planta 1ª Of. 4,  
29670 Marbella - Málaga - Spain  
Tel.: +34 952 906 110  
exxacon@exxacon.es  
www.exxacon.es